

Power Protection For
Business-Critical Continuity

Liebert GXT 700VA to 6kVA

True Online Power To Keep Your Business Up and Running



 **Liebert**[®]


EMERSON[™]
Network Power

■ True Online Power to Keep Your Business Up and Running



GXT2 700 - 6000VA

A high-performance UPS with proven reliability, custom configurability, hot-swap internal batteries and extensible runtime in a compact rack and tower design.

The GXT2 features and flexibility make it the optimal solution for your server & data room, networking and telecom applications that require reliable, continuous and quality power.

As a true online UPS, GXT2 provides power factor correction, frequency conversion, unlimited external battery connectability, and internal automatic and manual bypass capability as well as an optional external maintenance bypass. The Liebert GXT2 is designed with the features needed to protect mission-critical equipment from all power problems, such as sags, surges, spikes, outages, noise, frequency variations and waveform distortion.

Applications

- LAN and WAN servers
- Clustered network equipment: hubs, routers, bridges
- Remote telecommunications units
- Office Telecommunications systems
- Voicemail and e-mail servers
- Test and diagnostic equipment
- Engineering network servers
- Factory floor protection of micro processor controlled equipment
- Mission critical devices

Key Benefits

- Online VFI Technology With Sinewave Output
- Extended Battery Options for Long Runtimes
- USB, Serial and Network Communications
- Power Factor corrected input
- Advanced Early Warning Shutdown with MultiLink software
- Minimum Five Minutes of Battery Backup Time
- User Configurable Settings, Voltage & Frequency
- Hot-Swappable, User Replaceable Batteries
- Cold-start on Battery
- Remote UPS Monitoring through SNMP/Web Card
- Compact Design in 2U size up to 3000VA
- Optional Bypass Box for Easy Maintenance





The Right Features In Just The Right Size

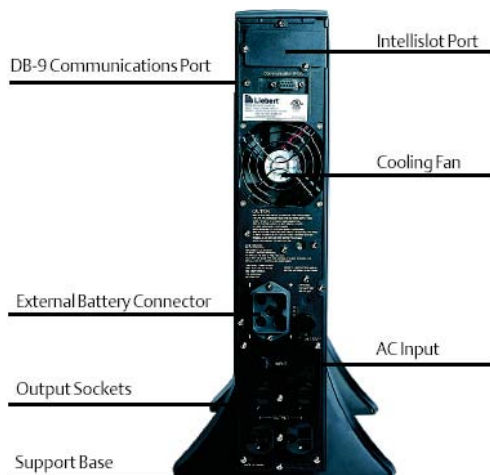
On-line design means zero transfer time from external to internal power. When utility power fails, your critical load remains supported by a seamless flow of power from the GXT2.

For maximum control, the GXT2 is custom configurable to your needs using a specially designed Windows software package. Offered in 700, 1000, 1500, 2000, 3000, 4500, and 6000 VA capacities, the GXT2 also provides easy serviceability with user replaceable batteries. And all this is available in one of the most affordable UPS systems in its class.

Quality Power

The Liebert GXT2 is a true on-line power source, so whatever the quality of power coming in - the pure sinewave output meets the exacting standards of your equipment. Unlike other UPS technologies, the GXT2's design handles all these potential power problems:

- Power spikes and transients
- EMI/RFI noise
- Voltage sags and brownout conditions
- Harmonics
- Power-factor corrected loads
- Outages



Built-In Reliability

The GXT2 is designed from the inside out for maximum reliability. It includes operating features that simply are not available on other units in its price range:

Power-factor corrected loads:

The GXT2 maintains stable voltage output even with the power factor corrected loads typical of modern computer equipment.

Frequency conversion:

Allows 60Hz input/50Hz output or 50Hz input/60Hz output with no derating.

Unlimited external battery connectivity:

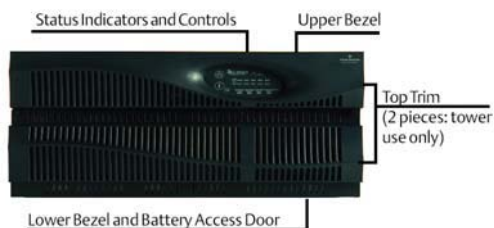
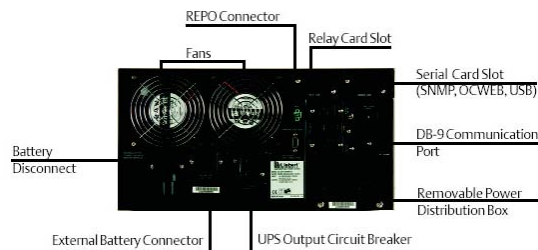
Any number of 2U/4U battery cabinets can be added to supply additional battery time.

Internal automatic and manual bypass capability:

Assures continuity of power to critical loads during system problems or maintenance.

Optional Maintenance Bypass and Output Power Distribution Box:

Allows for easy maintenance and safe operation on UPS or connected equipment during installation and routine service operations.

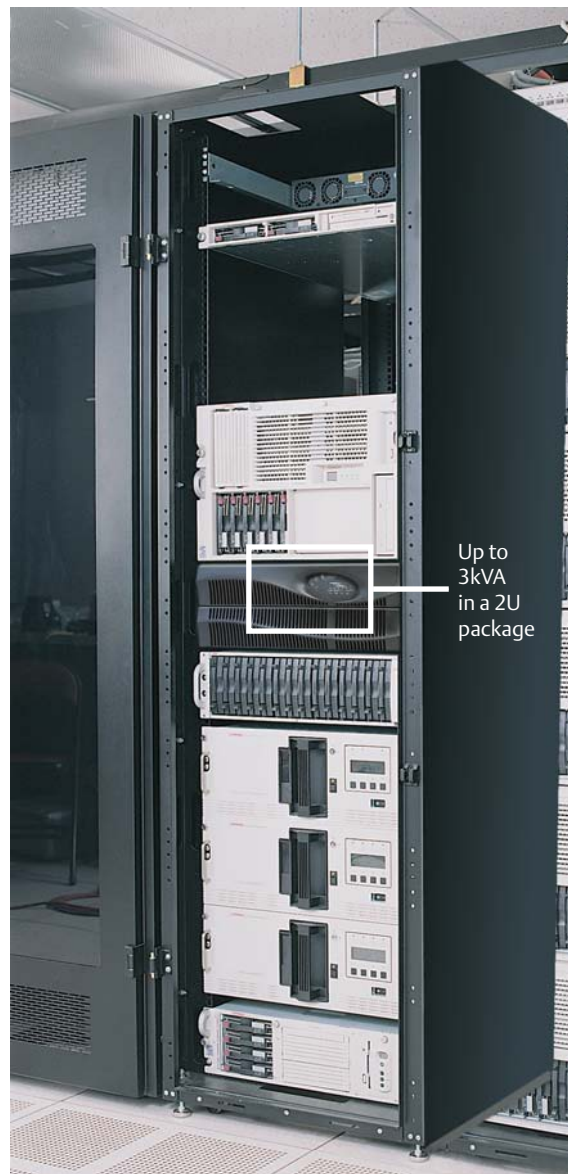


■ Sophisticated Protection in An Easy-To-Use Package

The GXT2 is easy to install...easy to set up...and even easier to use. It features simple operation for uncomplicated, error-free operation. A front-mounted panel displays: system status, load levels, battery time remaining and any alarm conditions.

For maximum flexibility, the GXT2 can be easily installed as a space-saving, rack-mounted unit or as a compact freestanding tower. This versatility allows it to be used to protect networks, servers, telecommunications equipment or industrial process equipment just about anywhere.

In order to fully protect your network, a UPS must be able to deal with different types of power input, including imperfect power from your electric utility, the variable output of most standby generators, and harmonics from inside the building or even from your own network equipment - or no input at all, providing power directly from the internal batteries (black start function). The Liebert GXT2 is designed to handle all these situations. If a UPS can't provide proper protection under these conditions, then it isn't providing complete protection.

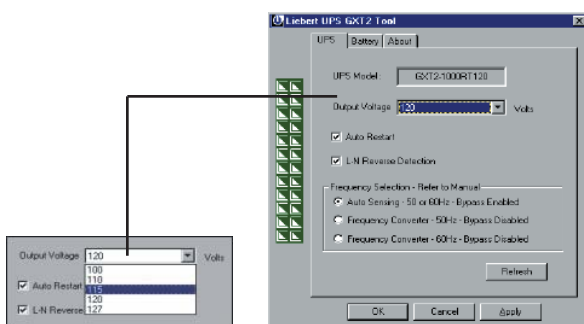


A New View On Configuring Your UPS

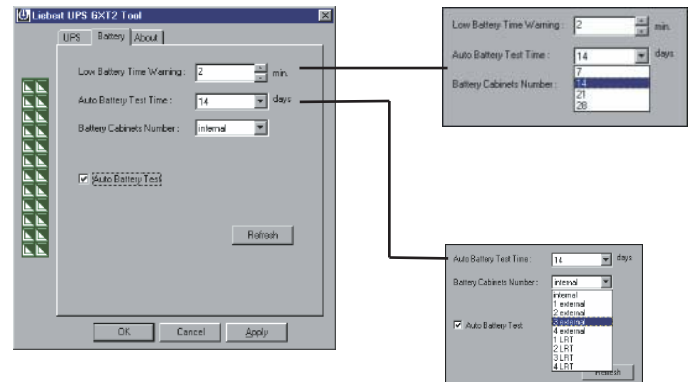
Each GXT2 is shipped with a Windows® software program that allows the user to program a variety of operating parameters. This capability allows you to customize the GXT2's performance to your specific requirements, providing a new level of power protection control and adaptability.

The software allows configuration of the following:

- Output voltage selectable: 200, 208, 220, 230, 240V
- Enable or disable auto restart
- Enable or disable line-neutral reversal detection
- Select frequency converter mode:
 - 60Hz input/50Hz output with no derating, bypass is disabled
 - 50Hz input/60Hz output with no derating, bypass is disabled
- Change the low battery warning from the standard 2 minutes
- Select how often you want the automatic battery test to occur
- Disable automatic battery test if desired
- Program the UPS for the number of external battery cabinets connected, allowing the UPS to report the correct run time.



Configure Output Voltage
 Enable/Disable
 Autorestart
 Enable/Disable Line Neutral
 Reversal detection
 Select Frequency Converter



Select Low Battery Warning Time
 Select Automatic Battery Test Time
 Select Number of External
 Battery Cabinets
 Enable/Disable Automatic Battery test

■ Communications For Power Monitoring and Control

The GXT2 offers a variety of communications options to provide the monitoring and control capabilities demanded by today's network computing systems.

Intellislot® SNMP/Web Card

For enhanced UPS communications and control, the Intellislot SNMP/Web Card will deliver SNMP and web management communications capability to your GXT2U unit. This feature will provide flexibility in how you monitor and control your UPS over the network.

The card is also easily configurable to work in a standard SNMP implementation and with Lieberts MultiLink unattended shutdown software.

Intellislot USB Adapter Card (USBCARD)

This hot-installable card provides a USB interface port for use with Microsoft Windows 2000 and XP Power Management, providing graceful unattended shutdown of your connected equipment without the need to install any additional software.

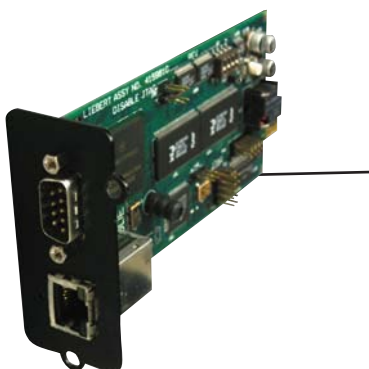
The USB card kit includes a 6-foot USB cable.

Intellislot Multiport Kit (Multiport4)

The Multiport4 Card is a hot-installable card that splits the UPS contact signals into four isolated sets of contact closure signals, enabling the user to interface with MultiLink Shutdown software on four servers simultaneously.

Intellislot Interface Kit for Relay Contacts (Relaycard-Int)

Provides 4 volt-free, relay contact signals for "On Battery", "Low Battery", "On Bypass", "UPS Fault", and "Summary Alarm" status. The card can be hot-installed, and connections are through a DB25F connector.



SNMP/Web Card monitors a wide range of UPS information, allowing users to monitor, control, and manage their GXT2 UPS over the network via the Web and SNMP



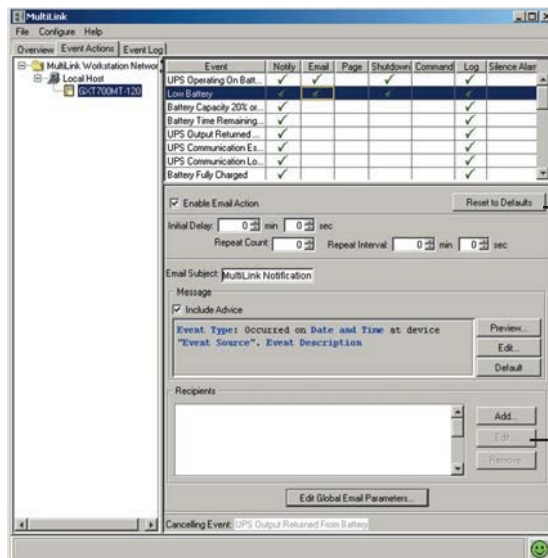
MultiLink Shutdown Software

Your GXT2 UPS system can be used with Liebert MultiLink shutdown software. This package automatically shuts down computer operating systems in a smooth and orderly manner if UPS battery capacity runs low.

Multilink automated shutdown software performs the critical task of protecting information for one computer or a network. It is available in both single and multi-user versions and is designed to run on a wide variety of operating platforms.

During an extended utility failure, MultiLink automatically shuts down computer operating systems in a smooth and orderly manner if UPS battery capacity runs low. MultiLink is designed to keep users informed. Notification about critical alarms can be sent to alphanumeric pagers or directly to the computer screen via pop-up messages.

MultiLink may be configured for either in-band or out-of-band operation. Using the network to send alarm messages and data can dramatically reduce cable and installation costs. Alternatively, separate communications cables can be run to each computer when network wiring is a concern.



Automatic Responses for every UPS event may be customized

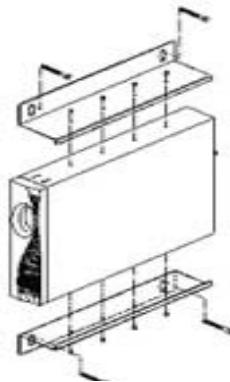
Configuration details appear in the bottom window pane when the event and response time are selected

■ A Complete Set of Rack and Wall Mount Options

The GXT2 series is complemented by a full set of rack and wall mount accessories designed to make it easy to use

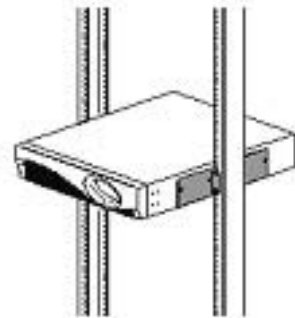
Wall Mount Bracket Kit for GXT 2U

The WMBKT2U kit is steel bracket painted black that allows any GXT 2U UPS or 2U Battery Cabinet to be mounted to a wall. One bracket kit is required for each UPS or Battery Cabinet. Hardware to mount brackets to UPS is supplied. Hardware to attach brackets to wall must be supplied by the installer.



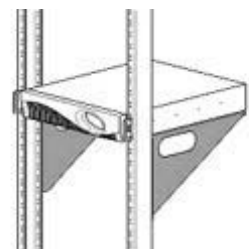
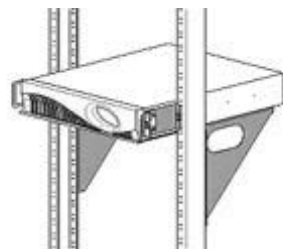
Telecom Rack 2U K Kit (2UTELECOMRKIT)

Center Mount brackets for 19" wide telecom/relay racks (For Use with GXT2U Only). The 2UTELECOMRKIT contains two metal brackets which mount (1) GXT2U UPS or Battery Cabinet into a 19 Telecom Relay Rack. One kit must be used for each 2U product that is mounted. UPS and brackets fit into 2U of space.



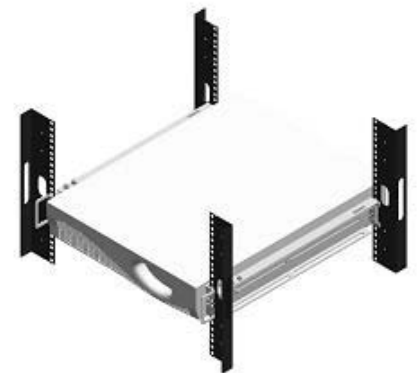
Rack Shelves for GXT & GXT 2U

Rack shelves allow mounting of the UPS into telecom/relay racks. The RS500 is designed to allow flush mounting of the UPS into 19" wide telecom/relay (single mounting rail type) racks. The RS600 is designed to allow center mounting of the UPS into 19 wide telecom/relay (single mounting rail type) racks. The RS700 is designed to allow flush mounting of the UPS into 23" wide telecom/relay (single mounting rail type) racks. The RS800 is designed to allow center mounting of the UPS into 23 wide telecom/relay (single mounting rail type) racks. RS600 and RS800 kits include adapter brackets for use with UPStation GXT and UPStationGXT 2U models and include hardware for mounting shelves to assembly



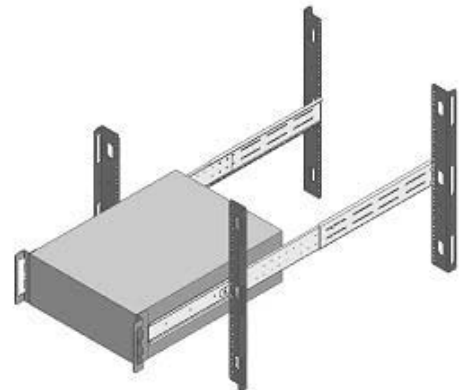
Rack Slide Kits for GXT2 Models (RMKIT18-32)

Telescoping rails that mount to the sides of the rackmount UPS to facilitate installation into a rackmount enclosure. This kit is for use with all GXT2 and associated battery cabinets. Rack kits include hardware for mounting rack slide to rack frame, hardware for mounting rack slide to UPS is included with UPS



Fixed Mounting Rails (brackets are fixed and do not slide) 201193G1L

Fixed rails mount to the front and back of a rack frame. The UPS is supported by an L bend in the rails and is secured in place by the bolting the UPS rack handles to the rack frame. Rail kits are adjustable from 17.5 to 32.5 inches and include hardware for mounting fixed rails to rack assembly. Hardware for mounting UPS rack handles to UPS frame is provided with UPS.



Rack Mounting Kits

RMKIT18-32	Extensible Rack Mount Kits can be fitted on racks 18" to 32.5" deep. Supports up to 90kg weight
201193G1L	Fixed Rail Kit for 19" wide racks, adjustable from 17.5" to 32.5" depth

Telecom/Relay Rack Shelves

2UTELECOMRKIT	Center Mount brackets for 19" wide telecom/relay racks
RS500	Flush-mount shelf for 19" wide telecom/relay racks
RS600	Center-mount shelf for 19" wide telecom/relay racks
RS700	Flush-mount shelf for 23" wide telecom/relay racks
RS800	Center-mount shelf for 23" wide telecom/relay racks

Wall Mount Kit

WMBKT2U	Wall Mount Bracket
---------	--------------------

■ The Solution That Gives You Exactly The Right Amount Of Protection And Support

The Foundation integration system is more than “just a rack” it is the “foundation” of a mini-computer room. It is designed to deliver maximum flexibility today and to comprehensively accommodate future support needs in the rapidly changing network equipment environment.

It can start simply as a basic integration system to house and organize network components. Or you can specify it at any level of protection up to the self-contained Foundation Mini Computer Room (MCR) by adding support systems including computer-grade air conditioning and rackmounting UPSs (like GXT2 or PowerSure InterActive).

The beauty of the system is that you don’t have to do it all at once. These features can be incorporated from the beginning or added at a later time to help meet both your current and future requirements.



GXT4500-6000 in Rack and Tower Mode



GXT700-3000 in Rack and Tower Mode



Available in a variety of sizes

Evolving Design

The Foundation system provides an organized, secure, controlled environment for your sensitive electronic equipment. A few of the major improvements to the Foundation over previous enclosure designs are:

- Foundation Enclosure
- Adjustable Rack Rails
- Reversible Hinged Door
- Improved Cable Management
- Easy Access Side Panels
- Multiple Door Options
- Complete Upgradability
- Foundation (Mini Computer Room)
- Top or 19” Rackmounting ECM Air Conditioner
- Low Sound Levels
- Energy Saving Features

Note : Rack solutions vary from country to country. Contact your local Emerson Distributor for availability, part numbers and pricing

Technical Data - {Liebert GXT2}

Model	GXT2 700RT230	GXT2 1000RT230	GXT2 1500RT230	GXT2 2000RT230	GXT2 3000RT230	GXT2 4500RT230	GXT2 6000RT230
Power Rating							
VA	700	1000	1500	2000	3000	4500	6000
W	490	700	1050	1400	2100	3150	4200
Dimensions & Weight							
Unit (WxDxH m m)	87 (2U) x 547 x 430				87 (2U) x 618 x 430		221 (5U) x 547 x 430
Shipping (WxDxH m m)	268 x 692 x 585					560 x 690 x 500	
Weight - Unit (kg)	22.5	22.6	23.2	24.7	31.9	67	67
Weight - Shipping (kg)	26.5	26.6	27.2	28.7	35.9	76.5	76.5
Input Parameters							
Input Voltage and Frequency	220/230/240 VAC user selectable; 40-70 Hz						
Voltage Range w/o Battery	119-280 VAC variable depending on load						176-276 VAC
Frequency Range	40-70 Hz auto sensing						
Input Power Connection	IEC 320-C14				IEC 320-C20 Hardwired		
Output Parameters							
Output Receptacles	(4) IEC 320-C13				(4) IEC 320-C13+(1) IEC 320-C19	Hardwired+(2) IEC 320-C19	
Wave form & Frequency	Pure Sine wave; 50 or 60 Hz Nominal (50 Hz default)						
Overload warning	200% for 8 cycles; 130% for 10 seconds with transfer to bypass					> 200% for 96 milliseconds; 131-199% for 2 seconds; 112-129% for 10 seconds with transfer to bypass	
Battery Parameters							
Type	VRLA, non spillable, flame retardant						
Approved manufacturers	in a Storage Battery / CSBFR1270F			Panasonic UP-VW1245P1		Yuas a / REW 28-12FR	
Quantity x Voltage x Rating	4x12Vx7.0Ah			4x12Vx9.0Ah	6x12Vx9.0Ah		20x12Vx5Ah
Backup Time							
Half load (minutes)	44	25	20	14	16	24	17
Full load (minutes)	17	11	7	6	6	10	7
Recharge time	5 hours to 95%					3 hours to 90%	
Batteries, other features	Hot Swap Batteries; Deep Discharge Protection; Black Start (w/o mains)						
Battery Test	Automatic, User configurable 7-28 days						
Environmental							
Noise	< 50 dB				< 55 dB		
Operating temp and altitude	0-40 °C; 0-3000 m						
Communications	Serial RS 232 standard, USB card, Relay card and SNMP / Web card						
Common Package	Manual, MultiLink software CD; MultiLink serial cable 3m; Rack mount handles; Tower Support base; Configuration program						
Additional Components	(2) 10 A IEC 320-C13 / 14 Output Cables				Input/output distribution		
					CEE7/7 to IEC- 320-C19 and	PD-C EH DWR Input/output distribution with maintenance bypass PD	
					F42 (1)		
Warranty	2 Years						
Standards & Requirements							
Safety	EN 50091-1-1, CE compliance mark, for both Low Voltage and EMC Directives				040-1-1; TUV / GS, CEEM C Directives		
Design, EMI / EMC, Transportation	V F I S S 1 1 1 according to IEC 6204-3; EN50091-2, Class A; EN 61000-4; ISTA Procedure 1A						
Extended Battery Cabinets							
Models	GXT2-48VBATT			GXT2-72VBATT		GXT2-240VBATT	
Unit (WxDxH m m)	87 (2U) x 547 x 430			87 (2U) x 618 x		176 (4U) x 522 x 430	
Shipping (WxDxH m m)	268 x 692 x 585			268 x 692 x 585		560 x 690 x 455	
Weight - Unit (kg)	28.3			42.5		65	
Weight - Shipping (kg)	32.3			46.5		76	
Quantity x Voltage x Rating	2x4x12Vx7.0Ah			2x6x12Vx		20x12Vx9.0Ah	
Approved Manufacturers	China Storage Battery / CSBFR1270F2			Panasonic / UP-VW1234P1		Yuas a / REW 45-12FR	
Extended Backup Time							
1 Cabinet (full/half load)	68/176	44/100	28/80	18/42	20/64	31/70	21/49
2 Cabinet (full/half load)	136/352	88/200	56/169	42/98	40/128	54/120	38/85
3 Cabinet (full/half load)	204/528	132/300	84/240	60/140	60/192	80/164	55/123
4 Cabinet (full/half load)	272/704	176/400	112/320	90/210	80/256	106/208	75/156

Emerson Network Power

1050 Dearborn Drive P.O. Box 29186 Columbus, Ohio
43229

T: 614-8880246 F: 614-8416022
T: 800-8779222 (US and Canada Only)

Country Offices**Emerson Network Power (Australia)**

Block P, Regents Park Estate, 391 Park Road, Regents Park,
Sydney, NSW 2143, Australia
T: 61-1300367686 F: 61-2-97438737

Emerson Network Power (China)

No.1 Kefa Road, Science & Industry Park, Nanshan District,
Shenzhen 518057, China
T: 86-755-86010808 F: 86-755-86010909

Emerson Network Power (Hong Kong)

7/F, Dah Sing Financial Centre, 108 Gloucester Road,
Wanchai, Hong Kong
T: 852-25722201 F: 852-28310114

Emerson Network Power (India)

Plot No. C-20, Road No. 19, Wagle Industrial Estate,
Thane (West), Maharashtra 400604, India
T: 91-22-25807000 / 2388 F: 91-22-25828358

Emerson Network Power (Indonesia)

Wisma 46 - Kota BNI, 16th Floor, Suite 16.01,
Jl Jend. Sudirman Kav.1, Jakarta 10220, Indonesia
T: +6221-2513003 F: +6221-2510622

Emerson Network Power (Japan)

New Pier Takeshiba, South Tower 7F, 1-16-1 Kaigan,
Minato-ku, Tokyo 105-0022, Japan
T: 81-3-54038594 F: 81-3-54032924

Emerson Network Power Asia Pacific Headquarters

7/F, Dah Sing Financial Centre, 108 Gloucester Road,
Wanchai, Hong Kong
T: 852-25722201 F: 852-28310114

Emerson Network Power (Korea)

8th Fl. Hongik University KangNamArt Center,
51-12 Banpo-Dong, Seocho-Gu, Seoul 137-044, Korea
T: 82-2-34831500 F: 82-2-5927883

Emerson Network Power (Malaysia)

Wisma Glomac 3, Block C, 6th Floor, Jalan SS 7/19,
Kelana Jaya, 47301 Petaling Jaya, Selangor Darul Ehsan, Malaysia
T: 603-7884 5000 F: 603-7884 5188

Emerson Network Power (New Zealand)

Unit 2, 75 Blenheim Road, Christchurch New Zealand
T: 64-3-3430235 F: 64-3-3430250

Emerson Network Power (Philippines)

3/F, King's Court 1 Building, 2129 Chino Roces Avenue ,
Makati City 1200, Philippines
T: 63-2-8934177 / 178 F: 63-2-8112027

Emerson Network Power (Singapore)

27 International Business Park #03-01 Primefield-Landmark
Building Singapore 609924
T: 65-64672211 F: 65-64670130

Emerson Network Power (Taiwan)

8F, 99 Nanjing East Road Section 5 Taipei, Taiwan 105, R.O.C.
T: 886-2-25283535 F: 886-2-87717297

Emerson Network Power (Thailand)

123 Suntowers Bldg.-B, 22nd Fl, Vibhavadi-Rangsit Road,
Ladyao, Chatuchak, Bangkok 10900, Thailand
T: 66-2-6178260 F: 66-2-6178277 / 278

Countries covered by our Asia Network include:









Bangladesh, Sri Lanka, Nepal, Pakistan, Vietnam,
Laos, Seychelles, Cambodia, Brunei, Papua New Guinea, Fiji

Mail marketing@emersonnetwork-ap.com for contact details

Emerson Network Power.

The global leader in enabling business-critical continuity.

emersonnetworkpower.com

- | | | |
|---|---|---|
|  AC Power |  Embedded Power |  Outside Power |
|  Connectivity |  Inbound Power |  Precision Cooling |
|  DC Power |  Integrated Cabinet Solutions |  Site Monitoring and Services |

Emerson Network Power and the Emerson Network Power logo are trademarks and service marks of Emerson Electric Co. 2005 Emerson Electric Co.