



DeskPro-Link

Uninterruptible Power Supply Software

User's Manual

For
MS-Windows 98
MS-Windows NT
MS-Windows 2000
MS-Windows Me
MS-Windows XP
MS-Windows 2003
MS-Windows Vista



COPYRIGHT ANNOUNCEMENT

LIMITED WARRANTY

THE PROGRAM AND ENCLOSED MATERIALS ARE PROVIDED "AS IS" WITHOUT WARRANTY OF ANY KIND, EITHER EXPRESSED OR IMPLIED, INCLUDING BUT NOT LIMITED TO THE IMPLIED WARRANTIES OF MERCHANTABILITY AND FITNESS FOR A PARTICULAR PURPOSE. THE ENTIRE RISK AS TO QUALITY AND PERFORMANCE OF THE PROGRAM AND ENCLOSED MATERIAL IS ASSUMED BY YOU.

LIMITATION OF REMEDIES

Emerson Network Power entire liability and your exclusion remedy shall be replacement of the media if you have met the conditions as described under "Limited Warranty."

In no event will Emerson Network Power be liable to you for any other damages arising out of your use of this program.

All mentioned trademarks are registered trademarks of their respective owners.

TECHNICAL SUPPORT

If there is any question or comment about this product, please feel free to contact us.

Emerson Network Power
<http://emersonnetworkpower.com>
upstech@emersonnetworkpower.com

Copyright 1999-200

CONTACT INFORMATION

I. Hotline Contacts:

UPS Support

upstech@emersonnetworkpower.com

Software Monitoring Support

monitoring@emersonnetworkpower.com

Warranty Administration

microups.warranty@emersonnetworkpower.com

Reseller Helpdesk Support

partner.support@emersonnetworkpower.com

	Local Phone Access #	International Toll Free #
Australia	+800-147-704	+ 800 1155 4499
New Zealand	+800-447-414	+800 1155 4499
Malaysia	1-800-88-22-88	+800 1155 4499
Singapore		+800 1155 4499
Philippines	(632) 636-8561	+800 10 EMERSON
Indonesia	+800-1-882288	

II. Country Offices

<p>Australia T: 61-1300367686 F: 61-2-97438737</p> <p>China T: 86-755-86010808 F: 86-755-86010909</p> <p>Hong Kong T: 852-25722201 F: 852-28310114</p> <p>India T: 91-22-25807000 / 2388 F: 91-22-25828358</p> <p>Indonesia T: 62-21-7507800 F: 62-21-7507899</p> <p>Japan T: 81-3-54038594 F: 81-3-54032924</p>	<p>Korea T: 82-2-34831500 F: 82-2-5927883</p> <p>Malaysia T: 603-7884 5000 F: 603-7884 5188</p> <p>New Zealand T: 64-3-3430235 F: 64-3-3430250</p> <p>Philippines T: 63-2-8934177 / 178 F: 63-2-8112027</p> <p>Singapore T: 65-64672211 F: 65-64670130</p> <p>Taiwan T: 886-2-25283535 F: 886-2-25283100</p> <p>Thailand T: 66-2-6178260 F: 66-2-6178277 / 278</p>
--	---

SIMPLE INSTALLATION

- ◆ Hardware Installation (see p3)
 1. Connect USB cable to UPS communication port.
 2. Connect USB cable to USB port of PC.
- ◆ Software Installation (see p5)
 1. Insert DeskPro-Link CD to the CD-ROM, DeskPro-Link will display the installation menu, or you can select **'run'** from windows start menu and execute **'setup.exe'**. DeskPro-Link files will be copied into the directory you appointed. When DeskPro-Link been lunched, the operating system will select the local language in DeskPro-Link for displaying. If there is no preferred language in DeskPro-Link, it will use English interface instead.
(Default: C:\Program Files\Emerson\DeskPro-Link\)
 2. After installation. For Windows 98, check if there is a **'Rupsmon Daemon'** icon in task bar. For Windows NT, go to 'control panel->service' and check if 'Rupsmon' service has started
 3. Click **'DeskPro-Link for Windows'** for parameter settings.
 4. Click **'Select UPS'** to monitor local or remote UPS.
 5. Click **'Settings'** to set **'Communication Type'** and **'Select Comm Port'**. If **'Communication with UPS'** on the main screen, this means you have connected with UPS.

---For More Parameters, Please Reference Other Topics---

CONTENTS

1.	Introduction	1
1.1.	Packing inclusions	2
1.2.	System requirements	2
2.	Hardware Installation	3
3.	DeskPro-Link for Windows	4
3.1.	Features	4
3.2.	Software Installation	5
3.3.	Start-up and Uninstall DeskPro-Link	5
3.3.1.	Start-up DeskPro-Link	5
3.3.2.	Uninstall DeskPro-Link	6
3.4.	Functions	7
3.4.1.	UPS dynamic display area	8
3.4.2.	UPS Status Area	8
3.4.3.	Function selection area	8

1. Introduction

DeskPro-Link is a smart UPS monitoring and controlling software. DeskPro-Link displays the status of UPS (e.g. input & output voltage, line frequency, load, temperature and battery capacity) in digital and graphic, which can help the users monitor the quality of power supply. Simultaneously, the users can remotely monitor UPS via network and manage the power more effectively.

On AC failure or low UPS battery conditions, DeskPro-Link will perform its monitoring function automatically. The software will then send warning messages through auto-dial and e-mail. In addition, DeskPro-Link has a new Windows NT service function, which allows the monitoring program to be executed automatically before log in.

DeskPro-Link is available in many languages, you can select the one that is most familiar for you to carry out the software configuration and operation. The DeskPro-Link will be the best partner for your smart UPS to ensure remote monitoring and management.

1.1.Packing inclusions

- ◆ One DeskPro-Link software CD. (Including DeskPro-Link user's manual)
- ◆ One USB cable,

1.2.System requirements

DeskPro-Link hardware and software requirements as follows:

- ◆ Pentium or higher PC with USB Port
- ◆ Emerson PSA, PS UPS
- ◆ MS-Windows 98
- ◆ MS-Windows NT v4.0
- ◆ MS-Windows 2000
- ◆ MS-Windows Me
- ◆ MS-Windows XP
- ◆ MS-Windows 2003
- ◆ MS-Windows Vista

2. Hardware Installation

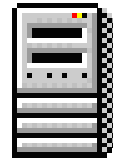
1. Connect male type-B connector of USB cable to UPS communication port.



PC



USB Cable



UPS

2. Connect male type-A connector of USB cable to communication port of system.

3. DeskPro-Link for Windows

3.1.Features

- ◆ Support Windows NT Service function.
- ◆ Support multiple shut down.
- ◆ Support multiple languages.
- ◆ Sending warning message by e-mail automatically.
- ◆ Calling pager for the warning message automatically.
- ◆ Remote monitoring UPS via TCP/IP or Internet.
- ◆ Detect AC fail and UPS battery low automatically.
- ◆ Scheduling turn on/off timing.
- ◆ Displaying the UPS status at graphic, such as the temperature, voltage, load, line frequency etc.
- ◆ Broadcasting warning message.
- ◆ Setting the countdown timing and the interval of each warning.
- ◆ Setting UPS diagnostic and self- test time.
- ◆ Before removing the system, automatically close and store the applicable programs.
- ◆ Recording and analyzing the UPS status.

3.2. Software Installation

The SETUP program is required for DeskPro-Link installation. After installation, the files will be copied to the “C:\Program Files\Emerson\DeskPro-Link\”.

Following the steps below:

1. Turn on UPS and PC.
2. Place the DeskPro-Link CD into CD ROM. DeskPro-Link will display the installation menu, or you can select ‘run’ from windows start menu and execute ‘**setup.exe**’.
3. After installation, DeskPro-Link files will be copied into the directory you appointed. When DeskPro-Link been lunched, the operating system will select the local language in DeskPro-Link for displaying. If there is no preferred language in DeskPro-Link, it will use English interface instead.
(Default: “C:\Program Files\Emerson\DeskPro-Link\”)

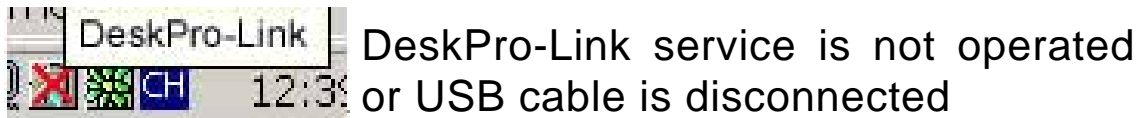
3.3. Start-up and Uninstall DeskPro-Link

3.3.1. Start-up DeskPro-Link

After installation, please restart the computer. For Windows 98/Me, check if there is a ‘**Rupsmon Daemon**’ icon in task bar. For Windows NT/2000/XP, go to ‘control panel->service’ and check if ‘Rupsmon’ service has started.



DeskPro-Link is operating normally



If you want to change the function configuration, please run the DeskPro-Link in the task bar directly or select "DeskPro-Link for Windows" from "DeskPro-Link" in program group of start menu in Windows.

3.3.2. Uninstall DeskPro-Link

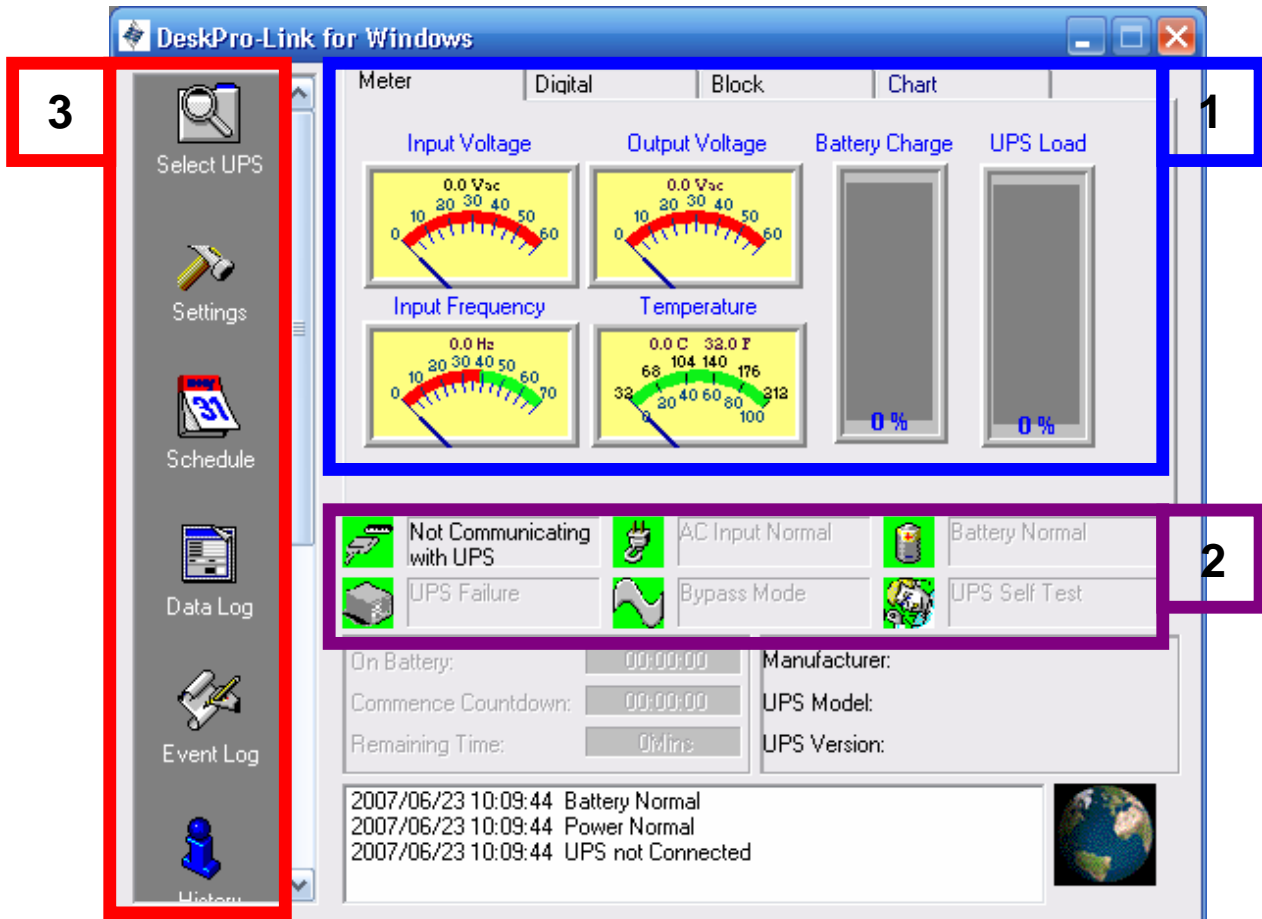
After installation, there is 6 selection as below under "DeskPro-Link" in Windows start menu. If you want to remove the DeskPro-Link from the system, please select "DeskPro-Link Uninstall".



- ◆ DeskPro-Link for Windows : Enter into DeskPro-Link main function figure
- ◆ DeskPro-Link Readme : DeskPro-Link simple introduction
- ◆ DeskPro-Link Register : DeskPro-Link register form
- ◆ DeskPro-Link Uninstall : Remove DeskPro-Link from Windows system

3.4.Functions

After entering DeskPro-Link, a functional chart displays as below.



1. UPS dynamic display area (3.4.1)

2. UPS Status Area (3.4.2)

3. Function selection area (3.4.3)

3.4.1. UPS dynamic display area

This area displays some relevant information of the UPS. Users could select different display mode, such as meter, digital, block and chart. The information includes input voltage, output voltage, line frequency, battery capacity, load, temperature etc.

3.4.2. UPS Status Area

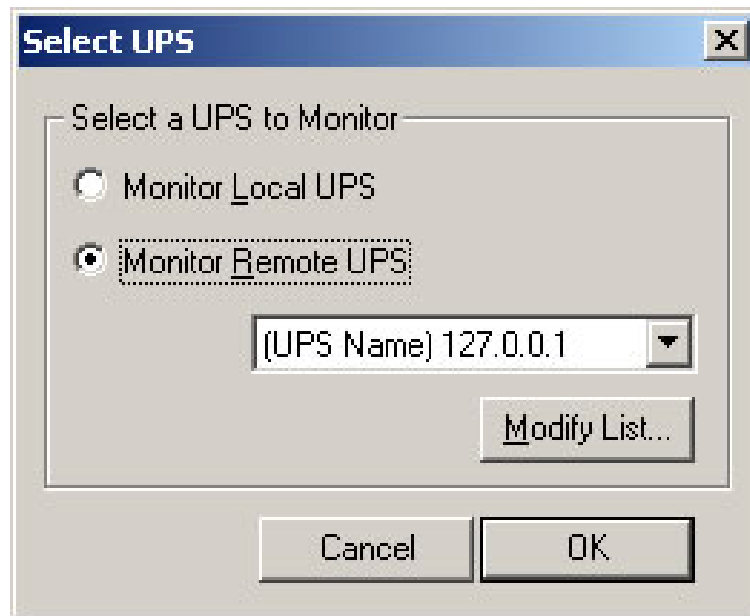
After the DeskPro-Link software installed, check whether the UPS is connected to the computer, AC power is in normal, status of UPS power supply and some relevant information of the UPS.

3.4.3. Function selection area

After a successful installation, you can start to configure the parameter value. Each parameter value will affect the normal operation of the DeskPro-Link program. Please configure the parameter value of the different function options, according to the following chapter.

3.4.3.1. Select UPS

Configure DeskPro-Link: Monitor local UPS or Monitor remote UPS. The method: press "select UPS" for the selection. Shown as below.



◆ **Monitor Local UPS**

Select monitor local UPS.

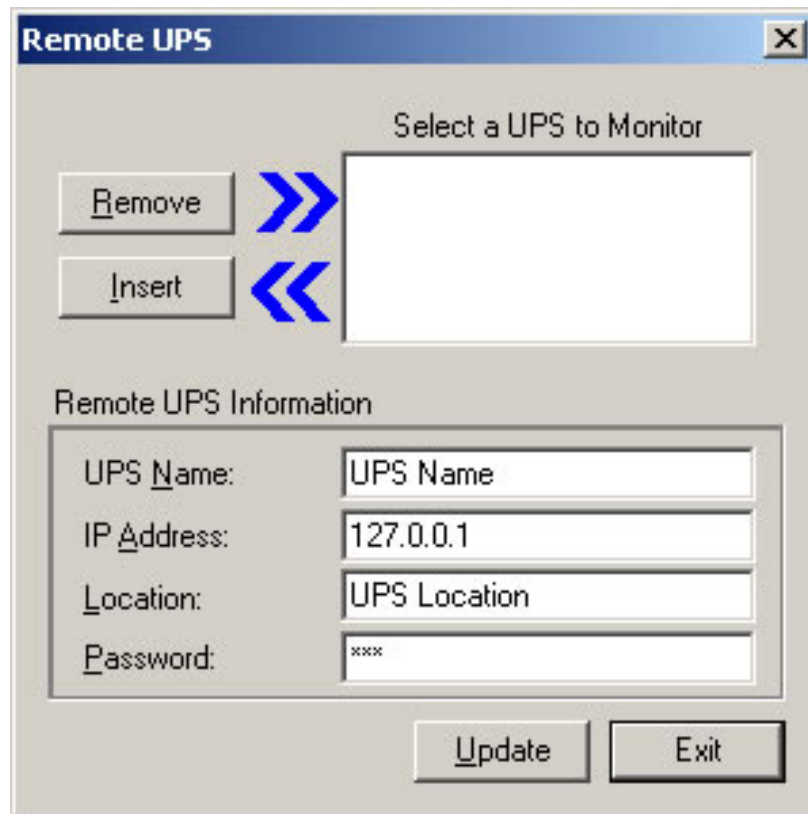
◆ **Monitor Remote UPS**

(1) Select monitor remote UPS.

(2) You can modify or insert the remote UPS data to the form and then exit.

(3) Select the UPS which you want to monitor and control in drop-down menu.

(4) Start to execute the function to monitor remote UPS.



3.4.3.2. Settings

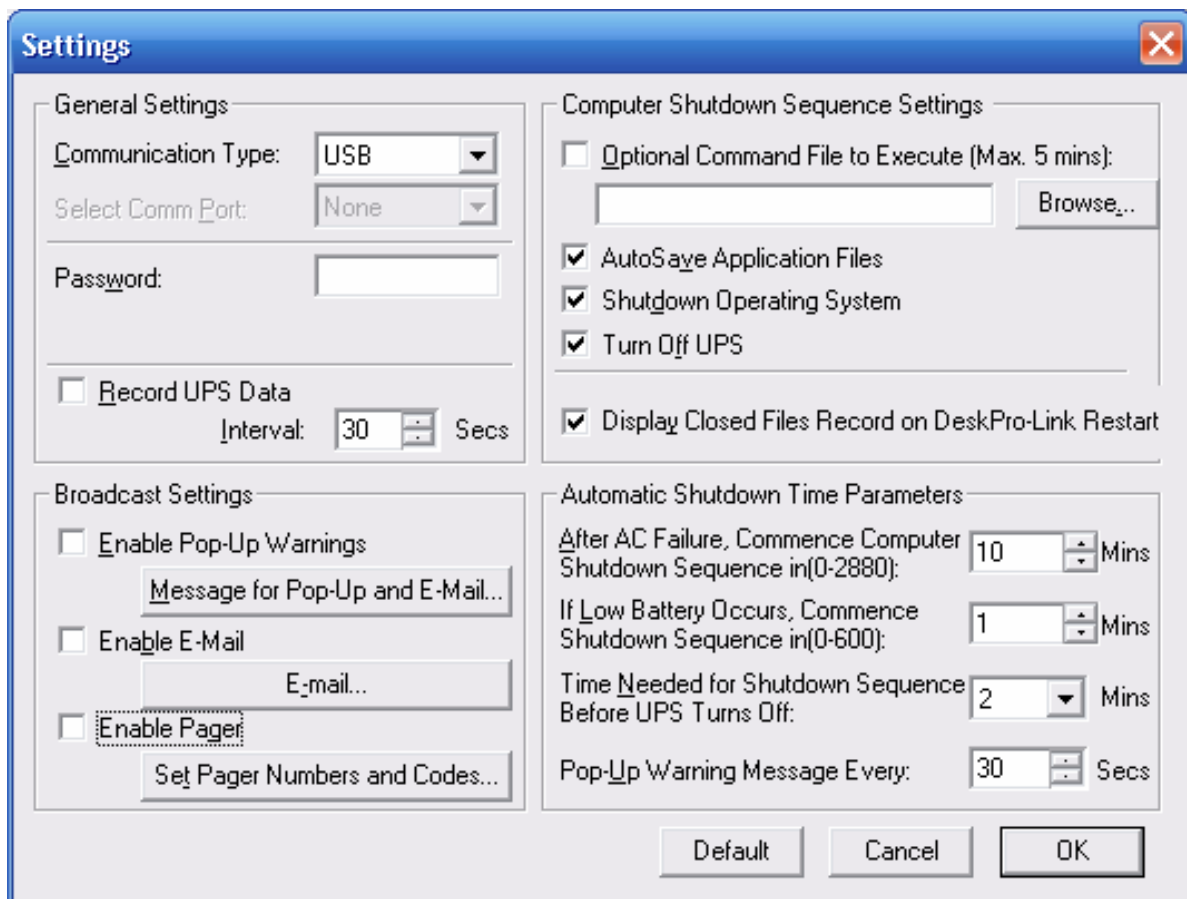
After selecting a UPS, other parameters may be configured on the other Settings dialogue box tabs. If parameter values are incorrectly set DeskPro-Link may have problems functioning properly.

Please click on icons listed below to get more information for its functions.

- ◆ General Settings : Defines location of UPS COM port ,communication protocol, and sets password for remote monitor enters.

- ◆ Computer Shutdown Sequence Settings : Set the functions you want to execute when DeskPro-Link detects AC failure or UPS battery low.
- ◆ Broadcast Settings: Enable /disable broadcasting warning message when DeskPro-Link detects AC failure or UPS battery low.
- ◆ Automatic Shutdown Time Parameters: Set the time for DeskPro-Link to shutdown operating system and UPS when an AC failure or UPS battery low is detected.

DeskPro-Link "Settings" windows :



A. General Settings

- ◆ Communication Type : Demo/USB
- ◆ Password: Set the password of the remote connection of the DeskPro-Link. The connection would be successful only if the right password is provided. The password prevents the remote unconfirmed computer from connection.
- ◆ Record UPS Data : Set the record time interval about input & output voltage, line frequency, load, battery capacity and temperature.

B. Computer Shutdown Sequence Settings

In this section, you can set the functions you want to execute when the DeskPro-Link detects the signal for closing the computer.

- ◆ **Optional Command File to Execute:** Set the file name to be executed before the system shutdown. (the full path and filename given.)

Attention: If the program which you execute can not quit automatically, you would not be able to shutdown Windows and turn off UPS.

- ◆ **Auto Save Application Files:** Configure auto saving all the opened applications and files before the system shut down. If not given filename, DeskPro-Link will auto save in TMP(e.g. ~Wnnnnn.TMP). Check the closed filename in "Close Files Record" in function menu.

Attention: DeskPro-Link will try to close general applications and store files by artificial intelligence mode, but DeskPro-Link can not ensure that all the applicable software will be stored normally.

- ◆ **Shut Down Operating System:** Set to shut down it's own operating system.
- ◆ **Turn Off UPS:** Set to turn off the UPS power supply.

Attention: After shutting down system and turning off UPS, please do not cut the power supply. Otherwise, UPS and computer would fail to start automatically when AC power restores.

- ◆ **Display Closed Files Record on DeskPro-Link Restart:** Display the closed record on DeskPro-Link restart if the

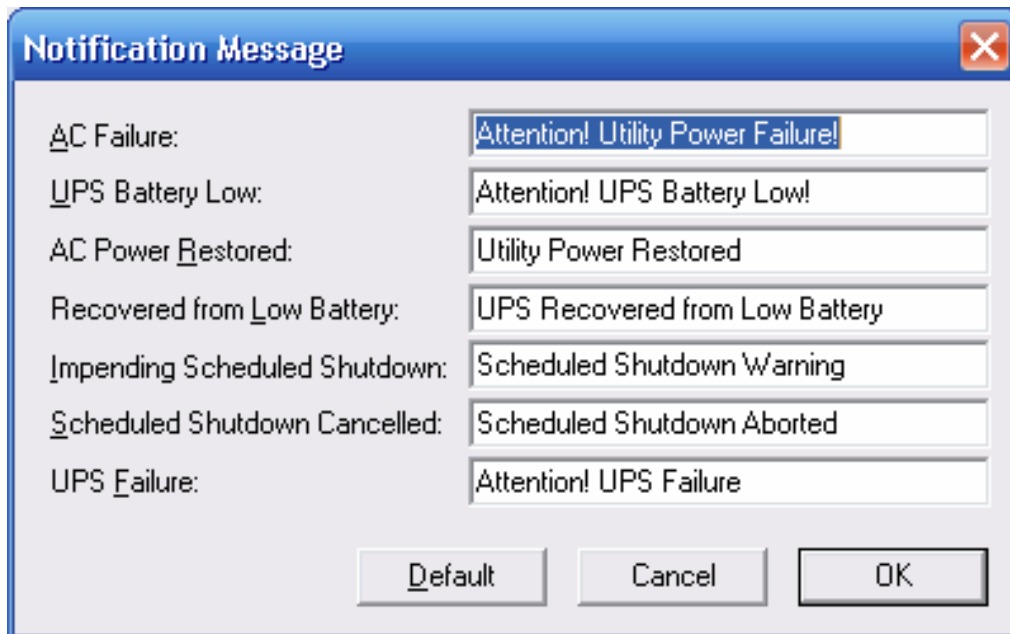
auto saving function was set before closing the computer. Shown as below.



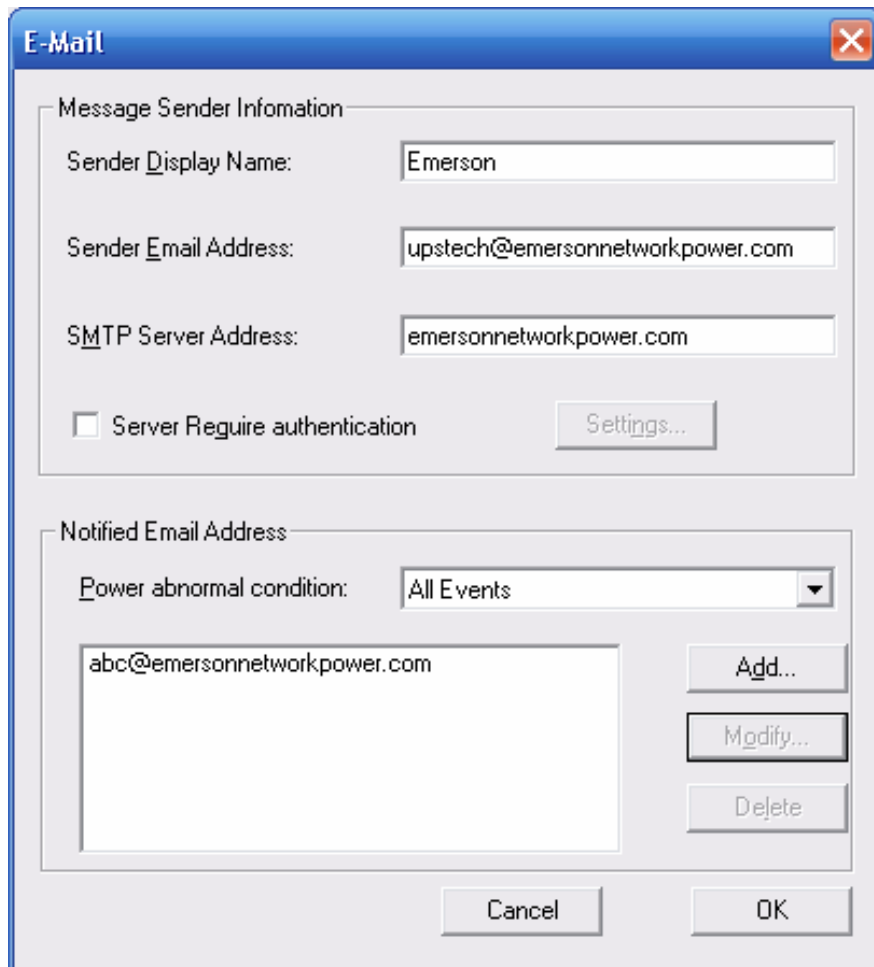
C, Broadcast Settings

Enable /disable broadcasting warning message when DeskPro-Link detects AC failure or UPS battery low.

- ◆ **Enable Pop-Up Warnings:** The users can set whether or not appear the pop-up warning on the screen when the DeskPro-Link detected AC power failure, UPS battery low or the signal of closing the computer. You can use the default message or you can set or modify the message on your own.



- ◆ Enable E-Mail: In this configuration, the messages could be sent to the administrator by e-mail. Shown as below.



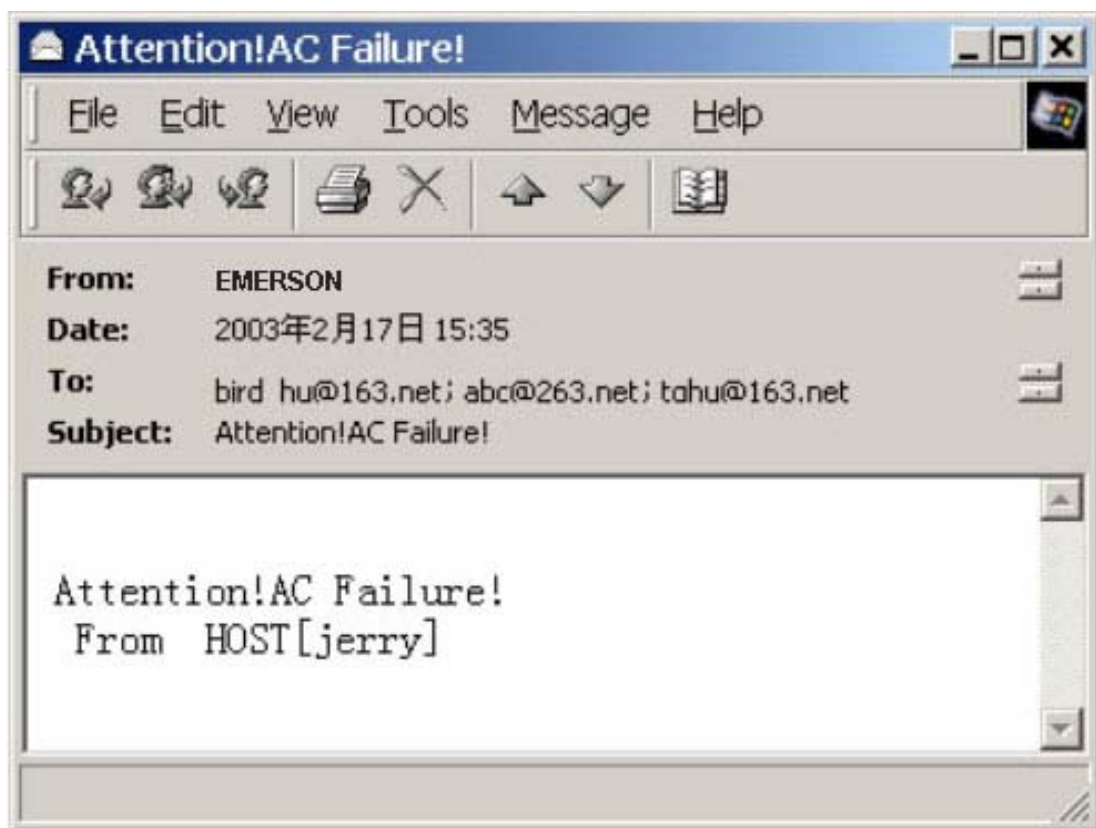
- Sender Display Name : Setting name for message "Sender".
- Sender Email Address : Setting the email address for sending message.
- SMTP Server Address : Set-up SMTP mail server address by IP or server-name.(e.g. 210.71.130.1 or emersonnetworkpower.com)
- Server Require Authentication : Some Email Server required authentication by password, user can set the password here.



- Notified Email Address : Select the event item for sending first, and set the email address for receiving message. Press “OK” to save all the setting .E-mail may be sent in response to different events. More than one E-Mail address can be specified in the form of a list separated by commas. There is no limit on the number of mail recipients.
- Power abnormal condition : All Events/AC Failure/AC Power Restored/UPS Battery Low/Recovered from Low.
- Please Press "Add/Modify/Delete" button to edit email address.
- For sending all events to the same email account, select “All Events” and type the receiving email address.

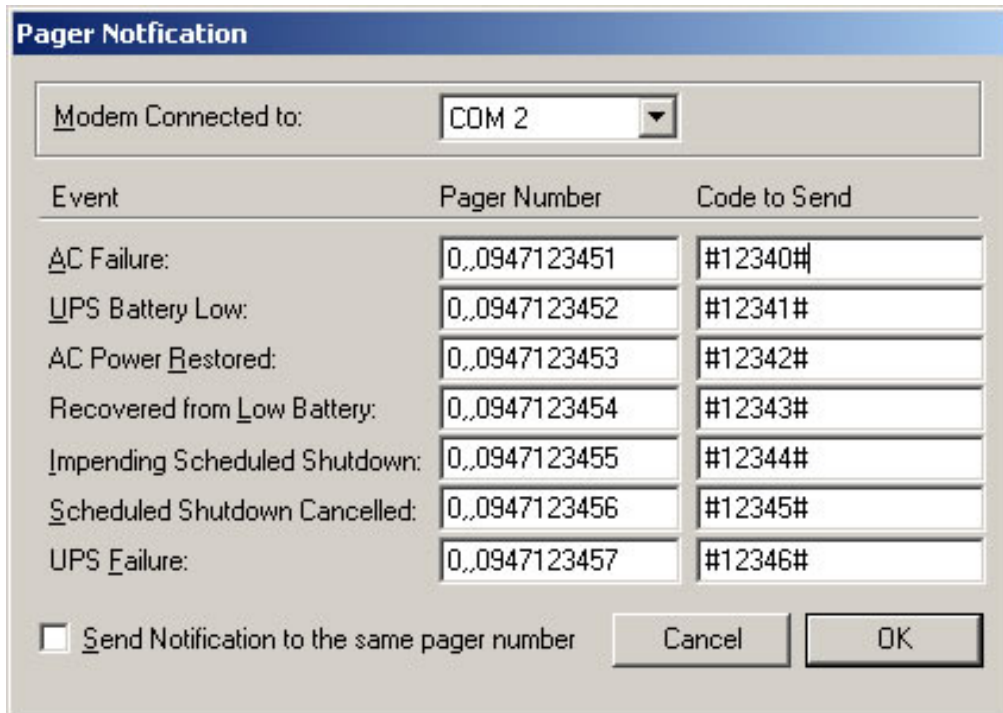


- Following picture is the email contents that sent automatically by “DeskPro-Link”:



◆ **Enable Pager:**

In this function, the users can set the messages to the system administrator by pager. The configuration's mode and screen is as below.



Event	Pager Number	Code to Send
AC Failure:	0,,0947123451	#12340#
UPS Battery Low:	0,,0947123452	#12341#
AC Power Restored:	0,,0947123453	#12342#
Recovered from Low Battery:	0,,0947123454	#12343#
Impending Scheduled Shutdown:	0,,0947123455	#12344#
Scheduled Shutdown Cancelled:	0,,0947123456	#12345#
UPS Failure:	0,,0947123457	#12346#

Send Notification to the same pager number

Cancel OK

- Modem connected to: set the communication port, which connects with the Modem. The setting value is COM1-COM4.
- Event:As listed above.
- Pager number: Input the pager number . If necessary, please input the prefix code for outside line first , then add "," for 0.5 second delay time, the full pager numbers at last.
- Code to send: you can input the event code for sending.
- Send Notification to the same pager number : Select this check box to send all messages to the

same pager and enter the relevant pager number in the AC Failure field.

For instance: Set the Modem connect to COM2 and dial "0" to access an outside line, and pager number is "0,947123456" and "#1234#" means AC power failed.

(Attention: The action should be done within 20 seconds from calling pager number to sending code transmission.)

D. Automatic Shutdown Time Parameters

UPS allows the users some time to shut down system before the UPS battery is exhausted. The characteristic configuration of UPS makes it to be sure that system can be restarted and operated normally.

- ◆ After AC Failure, Commence Computer Shutdown Sequence in: Set the continuous time for system operation after AC power fails. Please refer to the UPS hardware manual or consult to the UPS supplier before your configuration.

.settings range:0~2880 mins

.default value:10 mins

- ◆ If Low Battery Occurs, Commence Shutdown Sequence in: Set some time for system's continuous operation when battery low. For the setting value, the smaller is the better.

.settings range:0 ~600 mins

.default value:1 mins

- ◆ Time Needed for Shutdown Sequence Before UPS Turn Off: Set time interval from Windows shutdown to UPS

power supply turn-off. It should be considered whether the time is enough for archiving before the system shutdown. The time for archiving would be different for the amount and the size of the opened files .

.settings range : 0.2 ~ 99 mins

.default value:2 mins

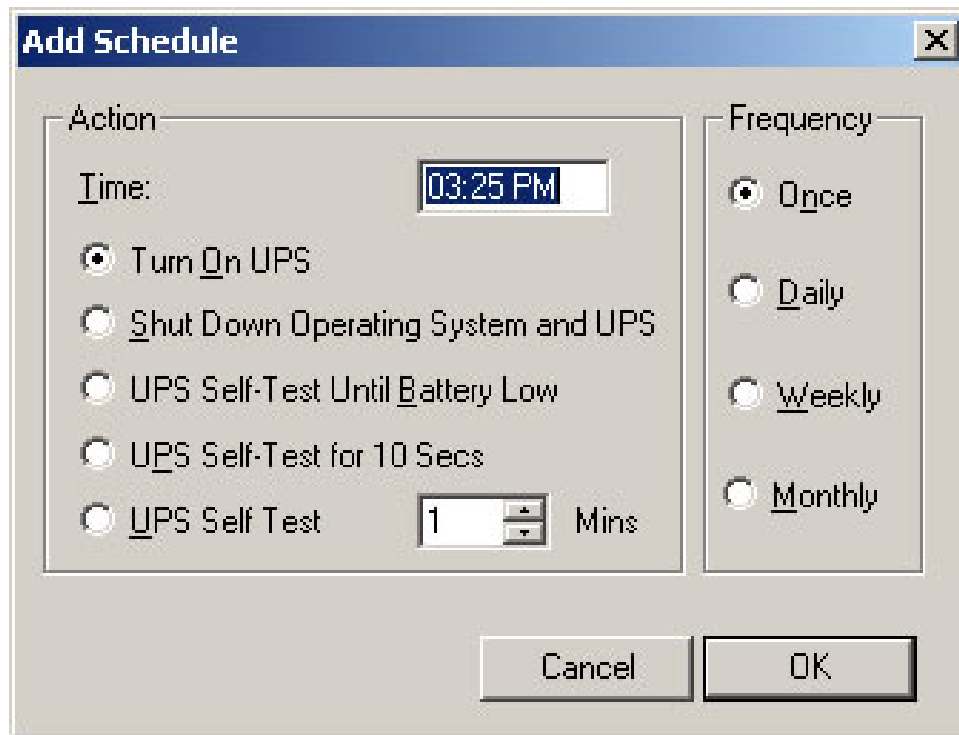
- ◆ Pop-Up Warning Message Every: Set the time interval of displaying the warning messages.

.settings range:10~600 secs

.default value:30 secs

3.4.3.3. Schedule

DeskPro-Link can set the scheduled time for UPS turn on /off and self-test. Therefore, the system could be operated without the management from system supervisor. You can set what and how often the schedule execution is. The setting category and operating frequency are as below.



◆ Actions

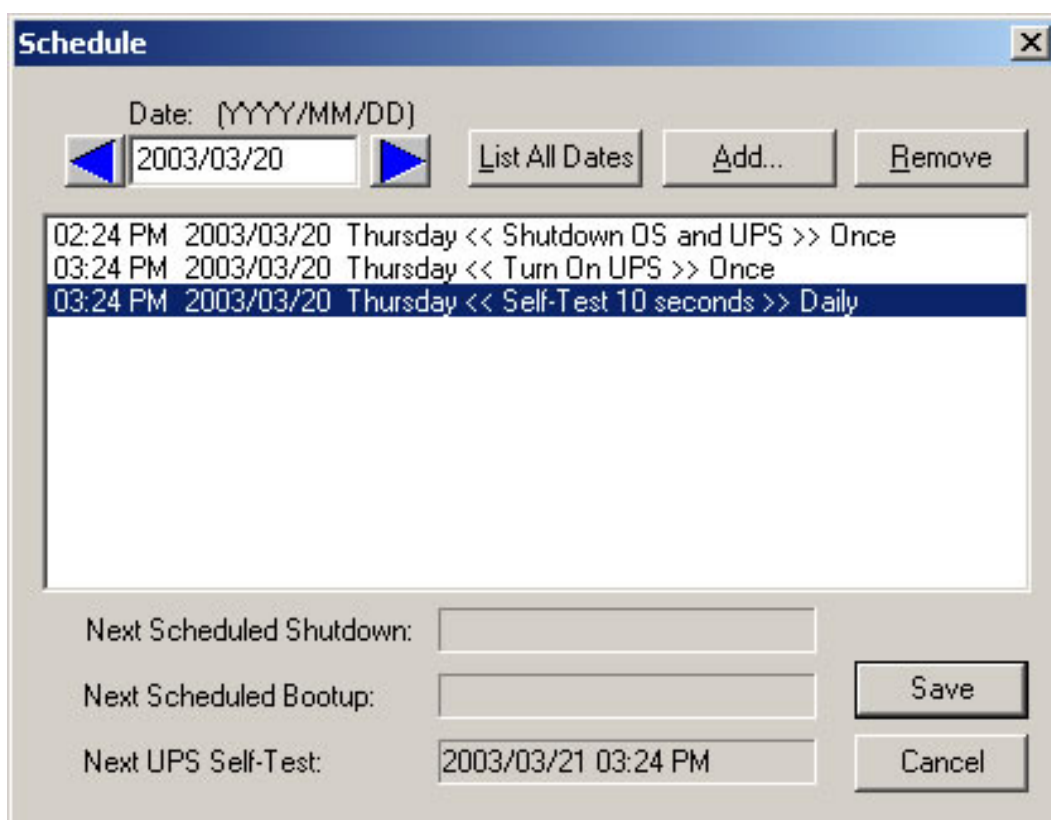
- .Turn on UPS
- .Shutdown Operating System and UPS
- .UPS Self-Test Until Battery Low
- .UPS Self-Test for 10 Secs
- .UPS Self-Test n mins

◆ Frequency

- .Once
- .Daily
- .Weekly
- .Monthly

Setting method: press "Schedule" in function menu. Select the date in the upper of left corner, then press the key "Add" for the "schedule Configuration". After the action

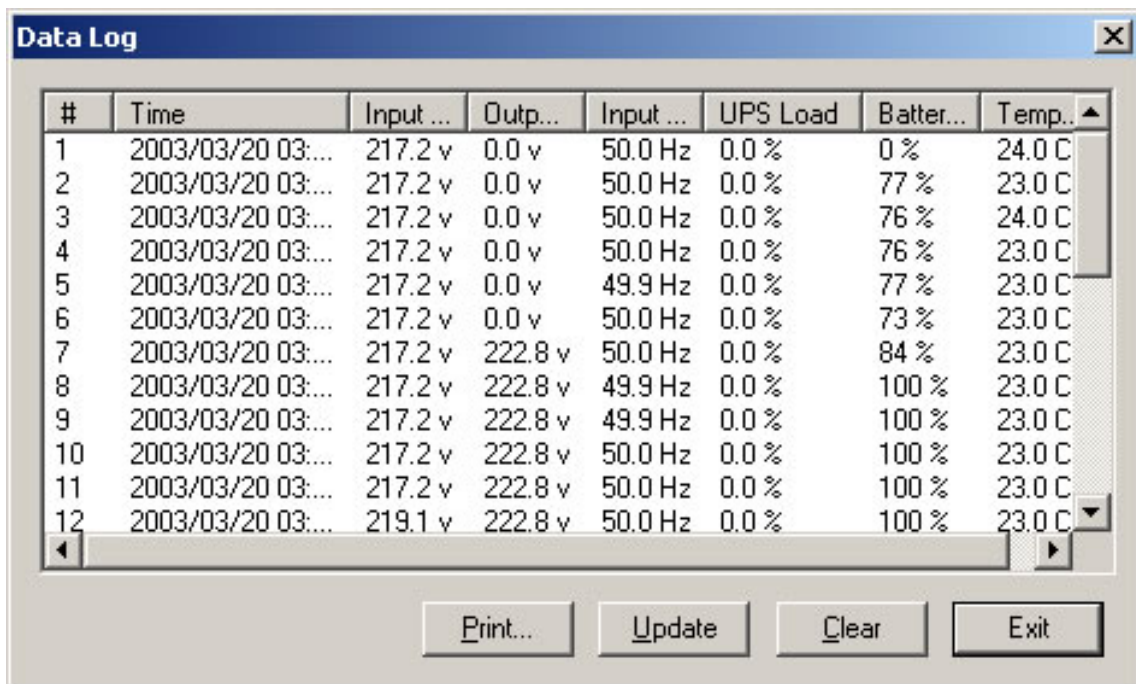
and frequency's selection, press "OK" and back to the "Schedule" screen, then the new schedule could be seen in the record. If you want to set more records, repeat the above. After configuration, press "save" for archiving or select the item then press "remove" for taking out the record. Shown as below.



3.4.3.4. Data Log

The UPS data could be recorded in this section, such as the input and output voltage, line frequency, load, battery capacity and temperature etc. The record interval could be altered in the area of " Automatic Shutdown Time Parameters" in "settings" of the function menu. In the

section of "Data Log", press "Update" for data refreshing and press "Clear" for data deletion. The maximum number of data could be recorded in this file is 2000. Shown as below.

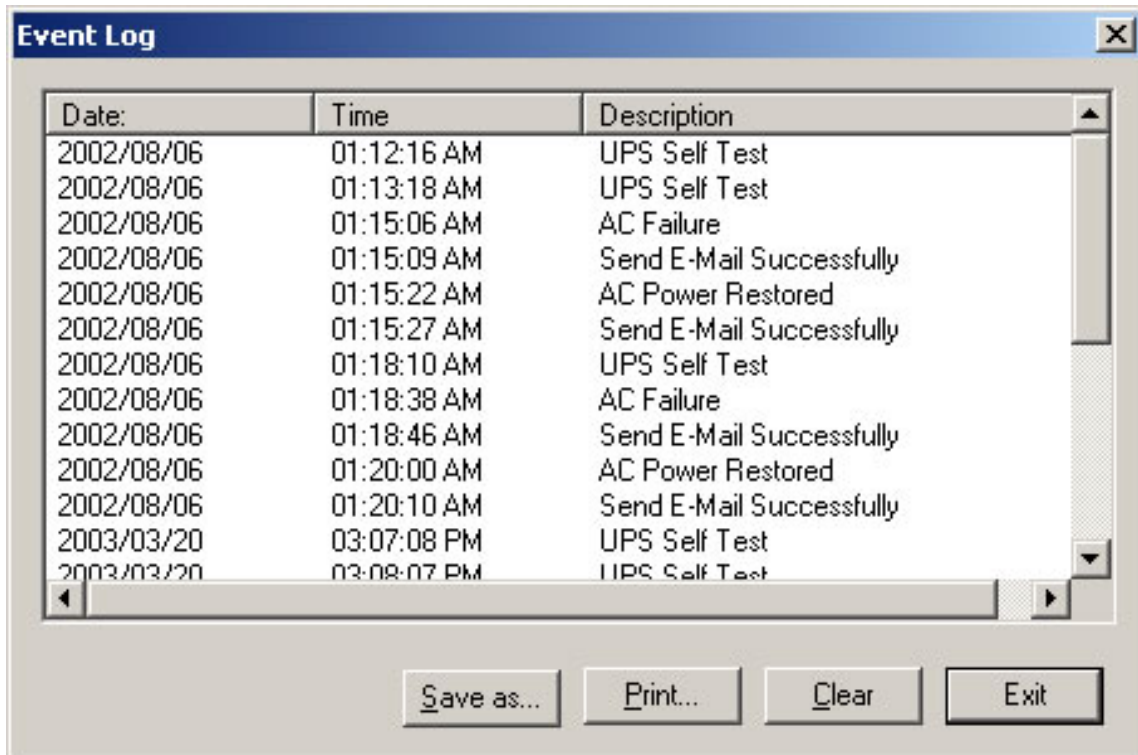


#	Time	Input ...	Outp...	Input ...	UPS Load	Batter...	Temp.. ▲
1	2003/03/20 03:...	217.2 v	0.0 v	50.0 Hz	0.0 %	0 %	24.0 C
2	2003/03/20 03:...	217.2 v	0.0 v	50.0 Hz	0.0 %	77 %	23.0 C
3	2003/03/20 03:...	217.2 v	0.0 v	50.0 Hz	0.0 %	76 %	24.0 C
4	2003/03/20 03:...	217.2 v	0.0 v	50.0 Hz	0.0 %	76 %	23.0 C
5	2003/03/20 03:...	217.2 v	0.0 v	49.9 Hz	0.0 %	77 %	23.0 C
6	2003/03/20 03:...	217.2 v	0.0 v	50.0 Hz	0.0 %	73 %	23.0 C
7	2003/03/20 03:...	217.2 v	222.8 v	50.0 Hz	0.0 %	84 %	23.0 C
8	2003/03/20 03:...	217.2 v	222.8 v	49.9 Hz	0.0 %	100 %	23.0 C
9	2003/03/20 03:...	217.2 v	222.8 v	49.9 Hz	0.0 %	100 %	23.0 C
10	2003/03/20 03:...	217.2 v	222.8 v	50.0 Hz	0.0 %	100 %	23.0 C
11	2003/03/20 03:...	217.2 v	222.8 v	50.0 Hz	0.0 %	100 %	23.0 C
12	2003/03/20 03:...	219.1 v	222.8 v	50.0 Hz	0.0 %	100 %	23.0 C

Buttons: Print... Update Clear Exit

3.4.3.5. Event Log

You can check the date, time, and description of events in Event Log. The maximum number of data could be recorded in this file is 2000. Shown as below.



3.4.3.6. History Calendar

In this section, you can check the monthly event, including AC fail, battery low, and UPS shutdown, UPS self-test etc. Different color stands by different category. press the block, the specific date will be displayed in the bottom of your right hand side. Press "PREV" for last month event record. Press "NEXT" for event record of the next month. Press the button "Exit" for quitting.

History Calendar [X]

Sunday	Monday	Tuesday	Wednesday	Thursday	Friday	Saturday
						1
2	3	4	5	6	7	8
9	10	11	12	13	14	15
16	17	18	19	20	21	22
23	24	25	26	27	28	29
30	31					

March 20 2003

- Utility Power Failure
- Battery Low
- Shut Down Operating System and UPS
- UPS Self Test

03:07:08 PM SELF-TEST

03:08:07 PM SELF-TEST

03:09:49 PM AC Fail

03:10:17 PM SELF-TEST

PREV
March 2003
NEXT
Exit

3.4.3.7. Control

Command UPS directly for the following test.

- ◆ UPS Self-Test for 10 Secs
- ◆ UPS Self-Test n Mins
- ◆ UPS Self-Test Until Battery Low
- ◆ Cancel UPS Self-Test
- ◆ UPS Beep On/Off (the UPS supports command "Q")
- ◆ Shut Down Operating System



3.4.3.8. Closed Files Record

In this section, you can check the closed applications and saved files. Method: select "Closed Files Record" in the

function menu. It only records the latest saved information.
Shown as below.



3.4.3.9. About DeskPro-Link

Clicking on "About" in the DeskPro-Link main screen displays copyright and version information on DeskPro-Link.



3.4.3.10. Exit DeskPro-Link

Select "Exit" in function menu to close the DeskPro-Link. (DeskPro-Link will still execute the monitoring function in the background)
